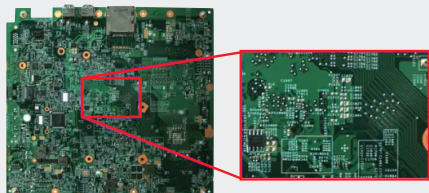


HIGH-RESOLUTION VARI-FOCAL REMOTE CONTROL LENS

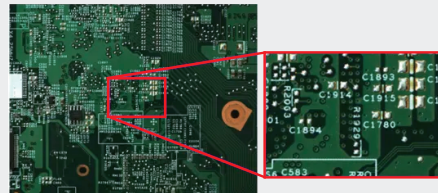
- Motorized lens that can be operated easily with a single USB cable
- Focus can be controlled via USB
- Fast speed focus control
- Ultra-high-resolution lens, suitable for 2/3" · 1/1.8" · 1.1"



ML3Z1226UC-MPW

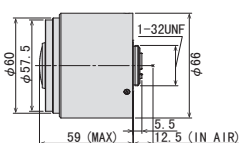


WIDE (12mm)

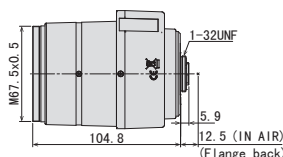


TELE (36mm)

EL3Z0416UCS-MPWIR



EL6Z0915UCS-MPWIR



Focal Length	4.0mm - 10mm				9mm - 50mm				
Max. Image Format	7.1mm × 5.4mm (φ 8.9mm)				7.1mm × 5.4mm (φ 8.9mm)				
F-Number	WIDE	F1.6 - F16C				F1.5 - F16C			
	TELE	F2.7 - F16C				F1.6 - F16C			
Control	Iris	Motorized				Motorized			
	Focus	Motorized				Motorized			
	Zoom	Motorized				Motorized			
Angle of View	D	138.1° ~ 52.9°	86.5° ~ 35.5°	120.3° ~ 47.5°	52.5° ~ 10.2°	35.9° ~ 7.0°	47.4° ~ 9.2°		
	H	104.8° ~ 42.2°	68.1° ~ 28.4°	92.9° ~ 37.9°	42.3° ~ 8.2°	28.8° ~ 5.7°	38.2° ~ 7.5°		
	V	76.3° ~ 31.6°	50.5° ~ 21.3°	68.1° ~ 28.4°	32.4° ~ 6.3°	21.7° ~ 4.3°	28.8° ~ 5.7°		
Min. Objective Distance	0.2m from front of lens				3m from front of lens				
Operating Temperature	-20°C - +60°C				-20°C - +60°C				

Back Focal Length	WIDE	8.5mm (In Air)	9.2mm (In Air)
	TELE	8.5mm (In Air)	9.2mm (In Air)
Flange Back Length	12.5mm (In Air)		12.5mm (In Air)
Mount	CS-Mount		CS-Mount
Filter Size	M55 P=0.75mm (With VM0418)*		M67 P=0.75mm (With VM0918)*
Tripod Screw			1/4-20UNC
Weight	161g		299g

Control Interface	USB2.0	
Power mode	Bus power (500mA)	
Connector	USB TypeA	

*Adapting for between 6mm and 10mm.

*When using filters, lens requires VM0418 (sold separately).
For more detail please refer to P.36

*When using filters, lens requires VM0418 (sold separately).
For more detail please refer to P.36